

City of Pawtucket, RI

***** Addendum #1 *****

RFP # 25-036

Slater Park North Parking Lot GSI Improvements

August 7, 2025

The attention of bidders submitting proposals for the above-referenced project is called to the following Addendum to the Request for Proposals indicated above. The items set forth herein, whether of omission, addition, substitution or other change, are all to be included in, and form a part of the proposed Contract Documents for the work.

Inclusion of this Addendum must be acknowledged in the spaces provided in the document entitled "Request for Proposals RFP #25-036 – Slater Park North Parking Lot GSI Improvements". Failure to acknowledge any and all addenda in the above specified bid form may be cause for rejection of the bids by the Owner on the grounds that it is not responsive.

This addendum is a total of one (1) page and five (5) attachments including Questions & Answers, pre-bid sign in sheet and revised Wage Rate.

GENERAL:

1. Questions received during the pre-bid meeting and via email are included with the responses in the attached question and answer document.

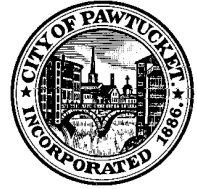
ATTACHMENTS:

- Question and answer document.
- 01 22 01 Measurement and Payment - Revision 1
- CD-503 Construction Details Plan Sheet – Revision 1
- Pre-Bid Sign-In Sheet
- Wage Rate Decision

Eric Hammerschlag

Eric Hammerschlag

City Engineer



QUESTIONS AND ANSWERS
RFP # 25-036
Slater Park North Parking Lot GSI Improvements
City of Pawtucket, RI

Questions received at pre-bid meeting on July 22, 2025:

Q1: The invert elevations will not work with precast concrete structures. Please advise.

A1: The invert into the structure is a 4" orifice, which is cored into the structure without a pipe connection. It is acceptable if the core impacts the top of the structure and acts as a weir with the frame and grate on top. It would be best to use a low-profile cast-iron frame and grate to meet the proposed rim elevations. The 8" outlet pipe connection should work with the precast concrete structure.

Q2: Is the gravel getting replaced in the parking lot?

A2: Gravel borrow base material under existing pavement shall be supplemented as needed with 8"-12" of gravel borrow to achieve the proposed finish grades shown on the plan.

Q3: Does the unit price item for asphalt include all asphalt paving or just the parking lot?

A3: UP-2 Bituminous Concrete Pavement is for all asphalt paving for the project including the parking lot and adjacent section of Sally Road. The City may choose to expand the limit of work and paving extents, based on unit prices and the project budget.

Q4: Can we add a cobblestone detail?

A4: Lined Sediment Forebay No. 1 detail and notes on Sheet CD-503 have been added to the to include specifications for cobblestone material and installation.

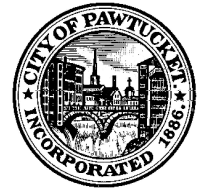
Q5: Unit price item says remove 7 trees, plans call for the removal of 5. Which is correct?

A5: Unit price is correct. There are five (5) trees and stumps to be removed and two (2) stumps to be removed, which are called out on plan Sheet CP-101 Site Preparation Plan.

Questions received via email:

Q6: On drawing CS-101 you show the 3 detectable warning panels in Asphalt. These only work in concrete. I do notice on drawing FIG.3 the sidewalk with the 2 panels is hashed in a typical concrete hash but no labeling. Please advise as to whether these 2 areas should be concrete and priced accordingly.

A6: The Detectable Warning System (R.I. Std. 48.1.0) detail on Sheet CD-504 includes a note stating Detectable warning system shall be in accordance with Section 905 of the RIDOT Standard Specifications. Per Section 905.2.3 Detectable Warning Panels in the RIDOT Standard Specifications, the panel shall be installed in fresh, unset Portland cement concrete.



Q7: Specification Section 3.2A states that UP-2 will be paid by the number of Tons placed, the bid sheet unit of measure is in square yards. Please clarify the UOM.

A7: Specification section 01 22 01 Price and Payment has been revised to clarify that UP-2 shall be paid per square yard. Revision 1 of 01 2201 Price and Payment is attached.

Q8: Specification Section 3.2B states that UP-2 Bituminous Concrete Pavement includes R&D existing, grading, and placing of new pavement. Is the gravel shown in the detail shown on CD-502 and the bituminous concrete curb included as well?

A8: Supplemental gravel borrow and bituminous concrete curb shall be paid separately from UP-2. UP-2 is for pavement removal, grading and compacting existing gravel borrow or surplus gravel borrow from the site, and repaved in accordance with the Bituminous Concrete Pavement details on CD-502.

Q9: Please specify the type of marking paint required (e.g., waterborne, epoxy, etc.).

A9: Marking paint shall be fast-drying waterborne paint in accordance with RIDOT Standard Specifications Section M17.02.

Q10: Could you please send a copy of the Prebid sign-in sheet from yesterday?

A10: Yes. Pre-bid sign in sheet is attached.

SECTION 01 22 01 - MEASUREMENT AND PAYMENT

PART 1 - GENERAL

1.1 RELATED DOCUMENTS

- A. Drawings and general provisions of the Contract, including General Conditions and other Division 01 Specification Sections, apply to this Section.

1.2 SUMMARY

- A. This Section includes measurement and payment paragraphs for the Work to be completed under each pay item (lump sum and unit price) for each item on the Bid Form.

1.3 DEFINITIONS

- A. Payment Items: The Contractor's distribution of the Contract Sum through listed work items, as outlined in this Specification.
 - 1. Each item is specified to include a defined scope of services. However, not all materials, labor, equipment, or services of a payment item are guaranteed to be listed or specified.
 - 2. Include costs associated with items of work required to complete the defined scope of services within the appropriately specified payment item.
 - 3. Payment items include all necessary material, plus cost for delivery, installation, applicable taxes, overhead, and profit.
- B. Unit price is an amount incorporated in the Agreement, applicable during the duration of the Work as a price per unit of measurement for materials, equipment, or services, or a portion of the Work, added to or deducted from the Contract Price by appropriate modification, if the scope of Work or estimated quantities of Work required by the Contract Documents are increased or decreased.
- C. Lump Sum: When used as an item of payment, means complete payment for the work prescribed for that portion of the Work under the item, or all work prescribed in the Contract, as the case may be.
 - 1. Lump sum payment items are groupings of the Work as determined by the Owner only for the Owner's convenience. Such listings of payment items shall establish the minimum level of detail for the Schedule of Values.
 - 2. The Schedule of Values shall further include the breakdown of each lump sum bid item that appears in the Agreement and shall include the Contractor's verified quantities used in preparing its bid. If accepted by the Engineer, this breakdown will be used in approximating percentages of completion of the lump sum bid items during the processing of payment applications.
- D. Payment for Work associated with individual Work Segments will not be released until such Work Segment is Substantially Complete, including site restoration and site improvements of that Work Segment and has been approved as such by the Engineer.

PART 2 - PRODUCTS (NOT USED)

PART 3 - EXECUTION

3.1 TREE REMOVAL (Item UP-1)

- A. Measurement
 - 1. Measurement for payment for tree removal will be measured per each tree cut and stump and root system removed and disposed.
- B. Payment
 - 1. This price and payment shall be full compensation for tree trimming, tree cutting, stump grinding, stump and root excavation, disposal of all and all else incidental thereto for which separate payment is not provided under other items in the Bid Form.

3.2 BITUMINOUS CONCRETE PAVEMENT (Item UP-2)

- A. Measurement
 - 1. Measurement for payment ~~shall be per square yard of for~~ bituminous pavement ~~removed, furnished prepared for installation~~ and installed on Sally Road and the North Parking lot for a depth of 3.5 inches, in accordance with the Bituminous Concrete Pavement Detail on Sheet CD-502 within the Contract Plans, ~~and shall be the actual number of Tons placed as determined by the Engineer.~~
- B. Payment
 - 1. Payment for bituminous concrete pavement shall be made for the square yard quantity as ~~determined listed above at the unit price bid for~~ in the Bid Form and shall be fully compensated ~~ed~~ for removal and disposal of existing asphalt, grading and compacting subgrade, furnishing and placing pavement.
 - 2. No payment will be made under UP-2 for refill material to replace any deficiency of backfill material.

3.3 TREE INSTALLATION (Item UP-3)

- A. Measurement
 - 1. Measurement for payment for installing/planting a tree will be measured per each tree planted in place. Species type and location is indicated within the Contract Plans.
- B. Payment
 - 1. This price and payment shall be full compensation for excavation, placement of root ball, backfilling, compacting, placement of mulch, installation of wood stakes and guy wires, as needed, and all else incidental thereto for which separate payment is not provided under other items in the Bid Form. Installation shall be in accordance with the Tree Planting detail on Sheet CD-504 within the Contract Plans.

3.4 TURF ESTABLISHMENT (Item UP-4)

A. Measurement

1. Measurement for payment for handling and placing loam and seed shall be the actual number of square yards stripped, placed, and seeded as determined by the Engineer. A depth of 6 inches of loam shall be used for landscaped areas. Establishment of grassy areas will require seed measured under this item and actual areas seeded.

B. Payment

1. Payment for loam includes all labor to strip, store, furnish new, place loam, all material, labor, and equipment required or incidental to the satisfactory completion of the work including seeding (during spring or fall growing season with approved seed mix), raking, periodic watering, and maintenance to achieve satisfactory growth and establishment, as depicted in the drawings to the specified grades, depths, and locations as excepted by the Engineer. It is the contractor's responsibility to adequately spread, water and maintain the new grass. Should the grass not establish itself to 80% coverage, the Contractor shall redo the work to re-establish acceptable growth at no additional payment.

3.5 REMOVAL OF UNSUITABLE MATERIAL (Item UP-5)

A. Measurement

1. Measurement for payment shall include the removal of a quantity of unsuitable material, such as defective gravel base, brick, stone mortar, blocks, cobblestone, curbing, concrete footing and other waste debris that is not scheduled for removal under the other sections of the specifications. The Contractor shall contact the Engineer/Owner's Representative in the event unsuitable material is encountered. Unsuitable material shall not be removed from the site without inspection and approval by the Owner's Representative. Removal requires certification of quantities by the Contractor.

B. Payment

Payment per cubic yard shall be inclusive of removal and disposal of unsuitable material in accordance with local and state requirements.

3.6 ALTERNATIVE ADD/DEDUCT ITEMS

- A. Refer to Bid form in Div 0 for description of measurement and payment for alternative add/deduct bid items.

END OF SECTION

SECTION 01 22 01 - MEASUREMENT AND PAYMENT

PART 1 - GENERAL

1.1 RELATED DOCUMENTS

- A. Drawings and general provisions of the Contract, including General Conditions and other Division 01 Specification Sections, apply to this Section.

1.2 SUMMARY

- A. This Section includes measurement and payment paragraphs for the Work to be completed under each pay item (lump sum and unit price) for each item on the Bid Form.

1.3 DEFINITIONS

- A. Payment Items: The Contractor's distribution of the Contract Sum through listed work items, as outlined in this Specification.
 - 1. Each item is specified to include a defined scope of services. However, not all materials, labor, equipment, or services of a payment item are guaranteed to be listed or specified.
 - 2. Include costs associated with items of work required to complete the defined scope of services within the appropriately specified payment item.
 - 3. Payment items include all necessary material, plus cost for delivery, installation, applicable taxes, overhead, and profit.
- B. Unit price is an amount incorporated in the Agreement, applicable during the duration of the Work as a price per unit of measurement for materials, equipment, or services, or a portion of the Work, added to or deducted from the Contract Price by appropriate modification, if the scope of Work or estimated quantities of Work required by the Contract Documents are increased or decreased.
- C. Lump Sum: When used as an item of payment, means complete payment for the work prescribed for that portion of the Work under the item, or all work prescribed in the Contract, as the case may be.
 - 1. Lump sum payment items are groupings of the Work as determined by the Owner only for the Owner's convenience. Such listings of payment items shall establish the minimum level of detail for the Schedule of Values.
 - 2. The Schedule of Values shall further include the breakdown of each lump sum bid item that appears in the Agreement and shall include the Contractor's verified quantities used in preparing its bid. If accepted by the Engineer, this breakdown will be used in approximating percentages of completion of the lump sum bid items during the processing of payment applications.
- D. Payment for Work associated with individual Work Segments will not be released until such Work Segment is Substantially Complete, including site restoration and site improvements of that Work Segment and has been approved as such by the Engineer.

PART 2 - PRODUCTS (NOT USED)

PART 3 - EXECUTION

3.1 TREE REMOVAL (Item UP-1)

- A. Measurement
 - 1. Measurement for payment for tree removal will be measured per each tree cut and stump and root system removed and disposed.
- B. Payment
 - 1. This price and payment shall be full compensation for tree trimming, tree cutting, stump grinding, stump and root excavation, disposal of all and all else incidental thereto for which separate payment is not provided under other items in the Bid Form.

3.2 BITUMINOUS CONCRETE PAVEMENT (Item UP-2)

- A. Measurement
 - 1. Measurement for payment ~~shall be per square yard of for~~ bituminous pavement ~~removed, furnished prepared for installation~~ and installed on Sally Road and the North Parking lot for a depth of 3.5 inches, in accordance with the Bituminous Concrete Pavement Detail on Sheet CD-502 within the Contract Plans, ~~and shall be the actual number of Tons placed as determined by the Engineer.~~
- B. Payment
 - 1. Payment for bituminous concrete pavement shall be made for the square yard quantity as ~~determined listed above at the unit price bid for~~ in the Bid Form and shall be full compensated ~~ion~~ for removal and disposal of existing asphalt, grading and compacting subgrade, furnishing and placing pavement.
 - 2. No payment will be made under UP-2 for refill material to replace any deficiency of backfill material.

3.3 TREE INSTALLATION (Item UP-3)

- A. Measurement
 - 1. Measurement for payment for installing/planting a tree will be measured per each tree planted in place. Species type and location is indicated within the Contract Plans.
- B. Payment
 - 1. This price and payment shall be full compensation for excavation, placement of root ball, backfilling, compacting, placement of mulch, installation of wood stakes and guy wires, as needed, and all else incidental thereto for which separate payment is not provided under other items in the Bid Form. Installation shall be in accordance with the Tree Planting detail on Sheet CD-504 within the Contract Plans.

3.4 TURF ESTABLISHMENT (Item UP-4)

A. Measurement

1. Measurement for payment for handling and placing loam and seed shall be the actual number of square yards stripped, placed, and seeded as determined by the Engineer. A depth of 6 inches of loam shall be used for landscaped areas. Establishment of grassy areas will require seed measured under this item and actual areas seeded.

B. Payment

1. Payment for loam includes all labor to strip, store, furnish new, place loam, all material, labor, and equipment required or incidental to the satisfactory completion of the work including seeding (during spring or fall growing season with approved seed mix), raking, periodic watering, and maintenance to achieve satisfactory growth and establishment, as depicted in the drawings to the specified grades, depths, and locations as excepted by the Engineer. It is the contractor's responsibility to adequately spread, water and maintain the new grass. Should the grass not establish itself to 80% coverage, the Contractor shall redo the work to re-establish acceptable growth at no additional payment.

3.5 REMOVAL OF UNSUITABLE MATERIAL (Item UP-5)

A. Measurement

1. Measurement for payment shall include the removal of a quantity of unsuitable material, such as defective gravel base, brick, stone mortar, blocks, cobblestone, curbing, concrete footing and other waste debris that is not scheduled for removal under the other sections of the specifications. The Contractor shall contact the Engineer/Owner's Representative in the event unsuitable material is encountered. Unsuitable material shall not be removed from the site without inspection and approval by the Owner's Representative. Removal requires certification of quantities by the Contractor.

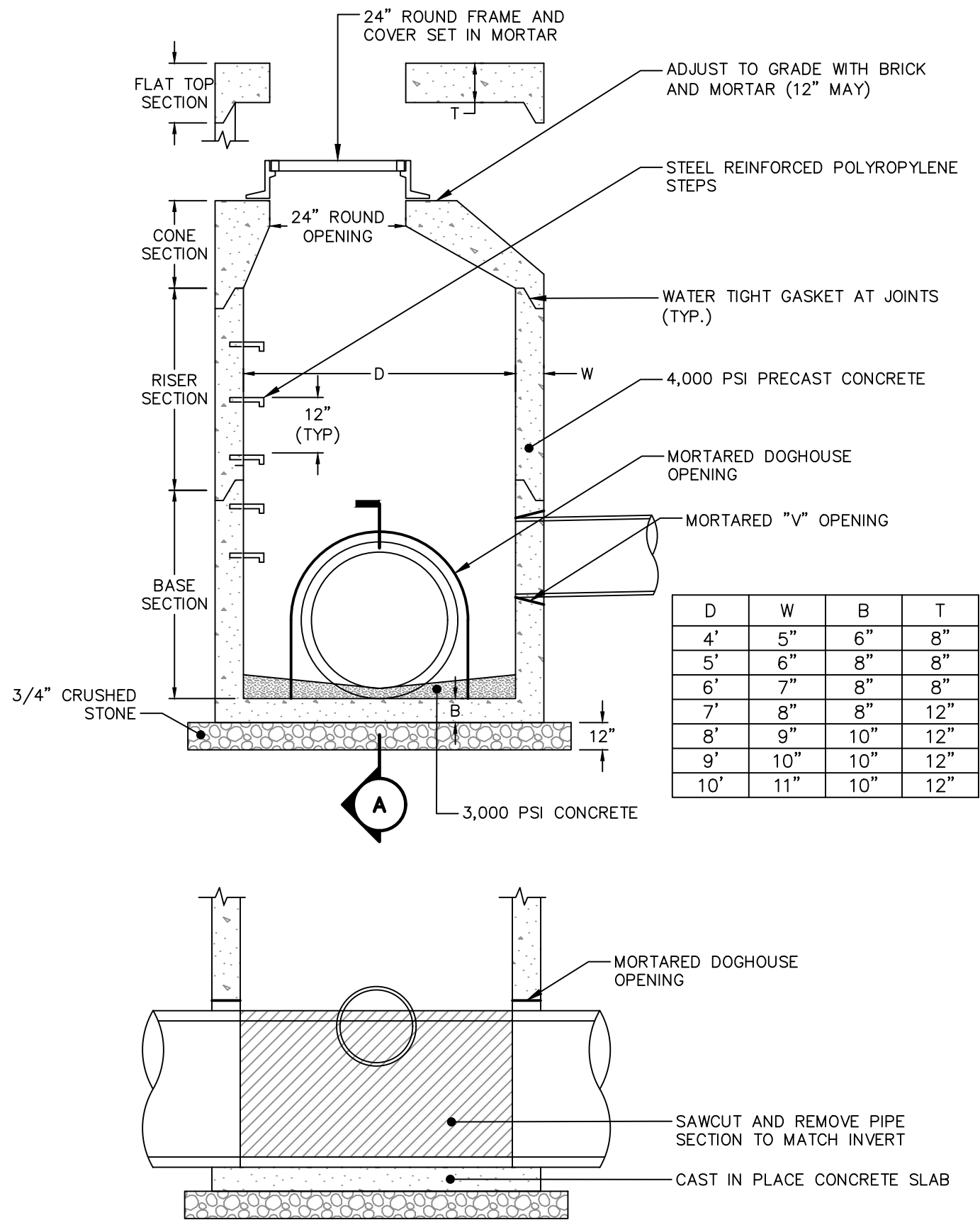
B. Payment

Payment per cubic yard shall be inclusive of removal and disposal of unsuitable material in accordance with local and state requirements.

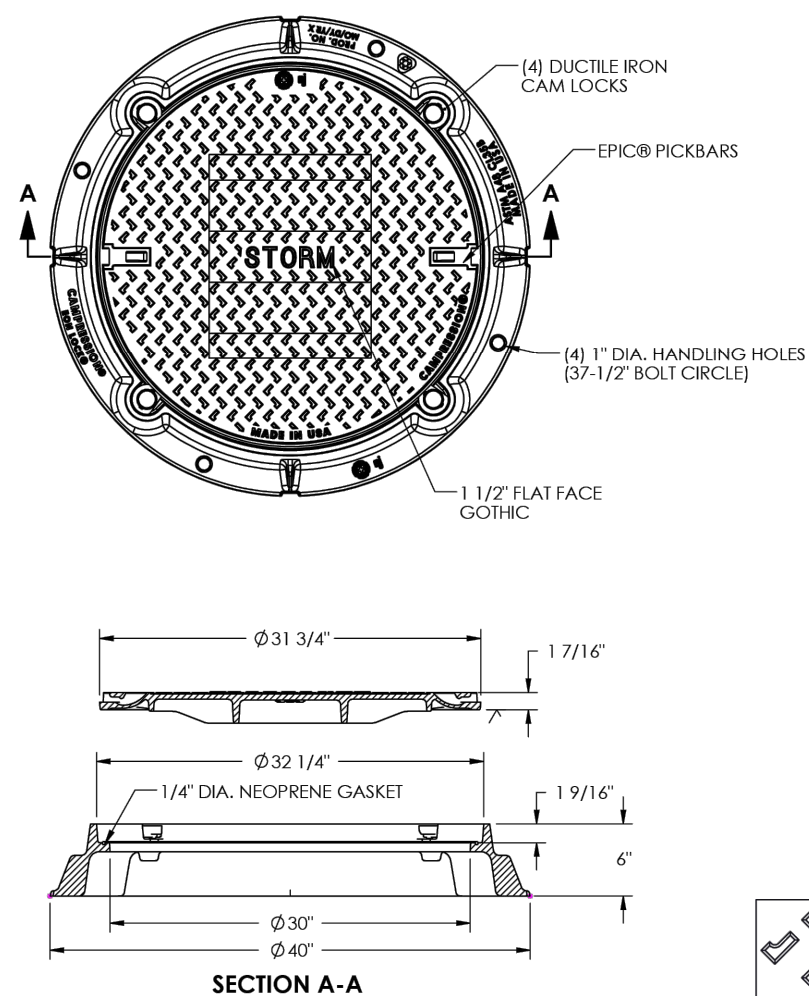
3.6 ALTERNATIVE ADD/DEDUCT ITEMS

- A. Refer to Bid form in Div 0 for description of measurement and payment for alternative add/deduct bid items.

END OF SECTION

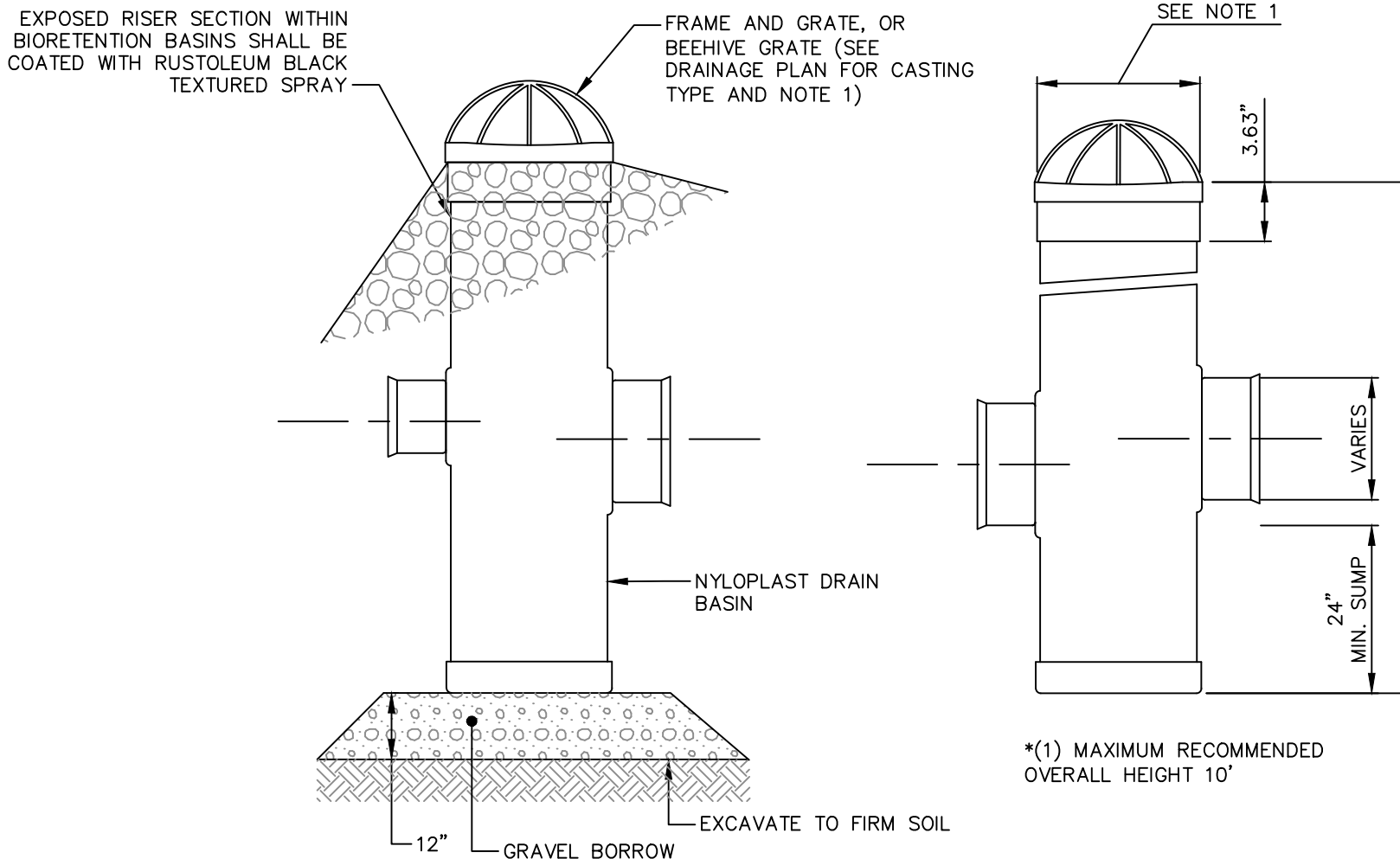


DOGHOUSE STORM MANHOLE (STMH)
NOT TO SCALE



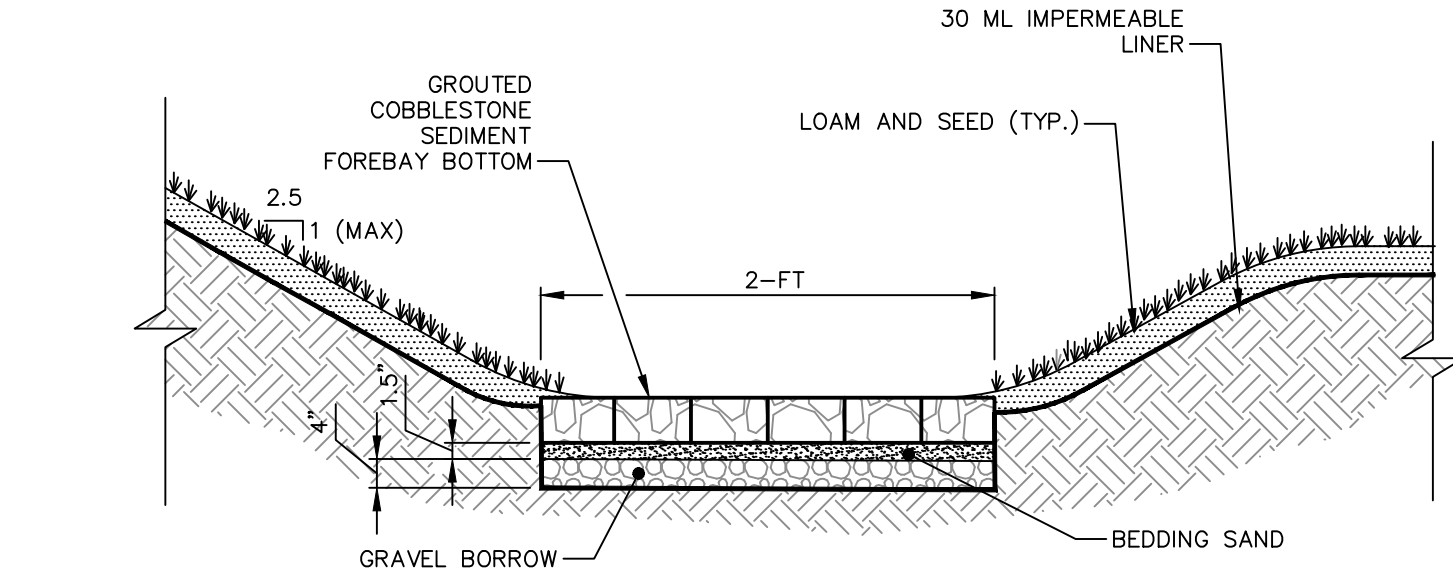
- NOTES:**
1. FRAME AND COVER SHALL BE COMPRESSION ASSEMBLY PRODUCT NUMBER 41420048W01 MANUFACTURED BY E.J. PRESCOTT, OR APPROVED EQUAL.
 2. COVER SHALL SAY "DRAIN" IN 3 INCH LETTERS.
 3. FRAME AND COVER SHALL HAVE AN H-20 LOAD RATING.
 4. COVER SHALL BE WATERTIGHT.
 5. FRAMES SHALL BE SET IN FULL BED OF MORTAR. ADJUST TO GRADE WITH RED CLAY BRICKS AND MORTAR.
 6. ANY NECESSARY ADJUSTMENTS DURING CONSTRUCTION WILL BE DONE BY SAW-CUTTING AND/OR CORING ONLY. NO JACKHAMMERS, HAMMERS AND CHISELS OR PNEUMATIC TOOLS WILL BE ALLOWED.

MANHOLE FRAME AND COVER
NOT TO SCALE



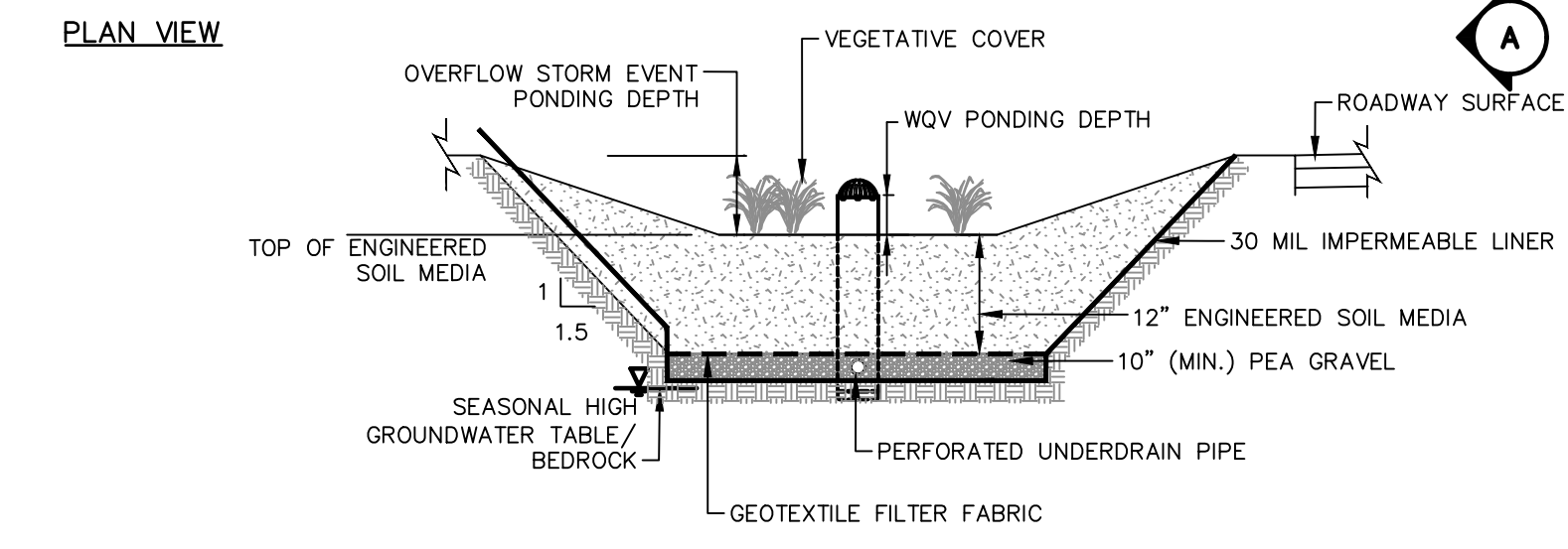
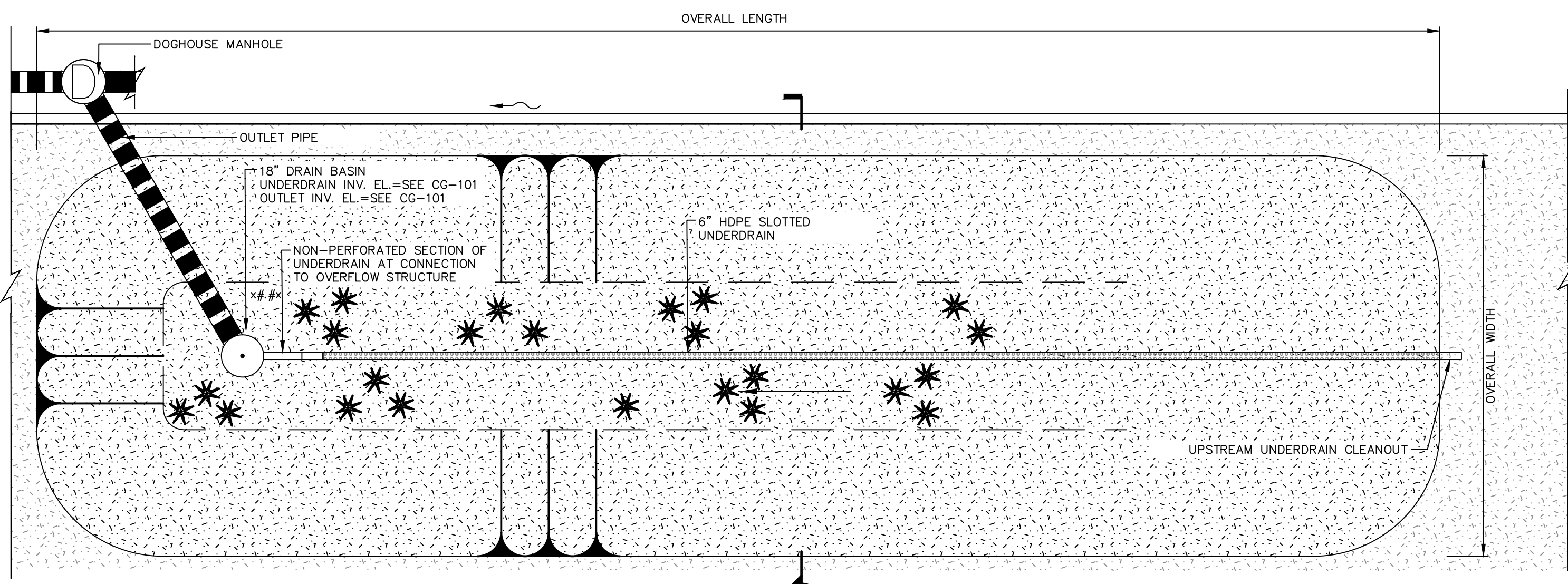
- NOTES:**
1. SEE DRAINAGE PLAN FOR LOCATION, DRAIN BASIN DIAMETER, GRATE, PIPE SIZE, PIPE MATERIAL, AND INVERTS.
1.1. DOMED GRATES SHALL BE DUCTILE IRON FRAME AND BEEHIVE GRATE MANUFACTURED BY ADS (PART #1899CGD OR PART #1299CGD), OR APPROVED EQUAL.
 - 1.2. FLUSH GRATES SHALL BE ROUND, STANDARD LOCKING GRATE ASSEMBLY - TYPE C MANUFACTURED BY ADS (PART #1899GCSL), OR APPROVED EQUAL.
 2. FRAMES AND COVERS AND FRAMES AND GRATES SHALL BE INTEGRATED DUCTILE IRON PER ASTM A536 GRADE 70-50-05.
 3. GRAVEL BORROW SHALL BE COMPACTED TO 95-PERCENT MODIFIED PROCTOR.
 4. GRAVEL BORROW SHALL CONFORM TO M.01.09, TABLE 1, COLUMN 1A OF THE STANDARD SPECIFICATIONS.

DRAIN BASIN (DB)
NOT TO SCALE

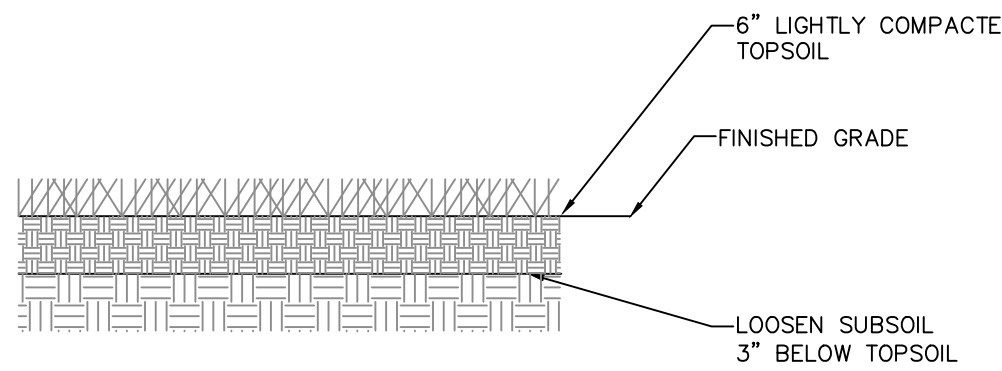


- NOTES:**
1. COBBLESTONES SHALL BE 4" X 8" BELGIAN BLOCK IN A GRAY TONE.
 2. GROUT SHALL BE HIGH STRENGTH NON-SHRINK GROUT SHALL BE SUITABLE FOR OUTDOOR USE, AND IT SHALL HAVE A MINIMUM COMPRESSION STRENGTH OF 8,000 PSI AFTER 28 DAYS AS DETERMINED BY TESTING UNDER ASTM C109. IT SHALL NOT EXHIBIT ANY MEASURABLE DECREASE IN VOLUME AFTER CURING. ALL GROUT MATERIALS SHALL BE LISTED ON THE RIDOT'S APPROVED MATERIALS LIST.
 3. COBBLESTONES SHALL BE REPLACED IN A RUNNING BOND PATTERN.

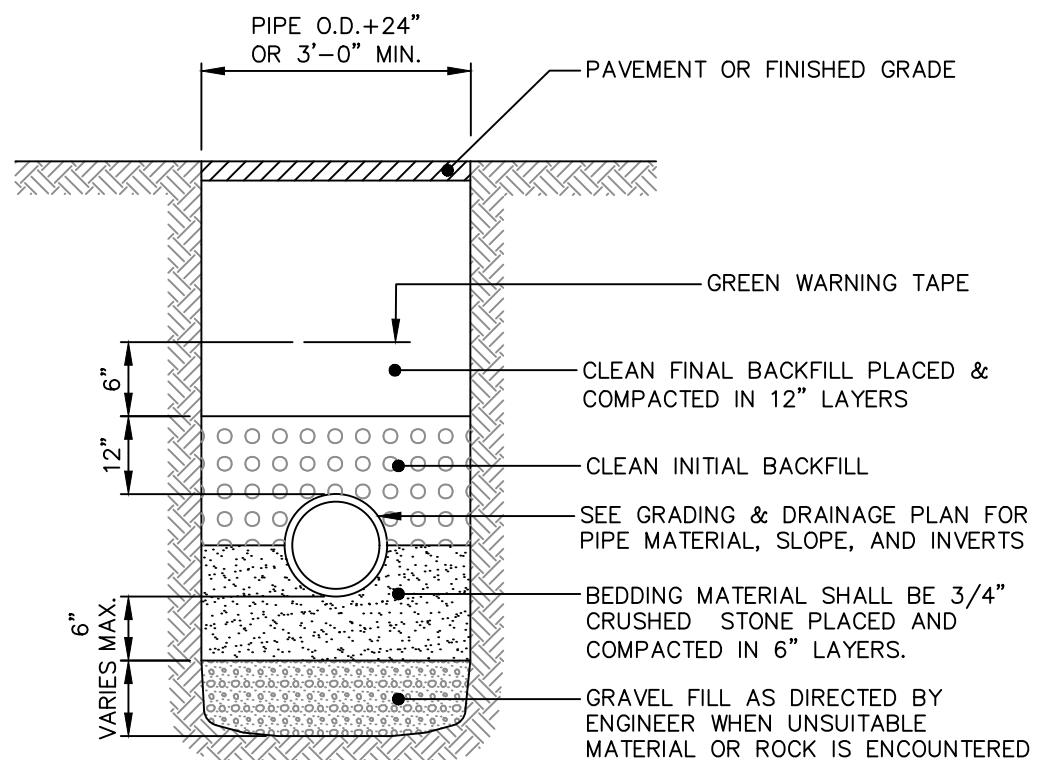
LINED SEDIMENT FOREBAY NO. 1
NOT TO SCALE



LINED BIORETENTION BASIN
NOT TO SCALE



LOAM AND SEED
NOT TO SCALE



STORM DRAIN TRENCH
NOT TO SCALE

TYPICAL ENGINEERED SOIL MEDIA COMPOSITION:

ENGINEERED SOIL MEDIA SHALL HAVE A LOAMY SAND SOIL TEXTURE PER USDA TEXTURAL TRIANGLE. THE SOIL MIXTURE SHALL BE 60 - 70% SAND BY VOLUME; 15 - 25% TOPSOIL OR LOAM BY VOLUME; AND 15 - 25% ORGANIC MATTER (CONSISTING OF PARTIALLY DECOMPOSED SPHAGNUM PEAT WITH 100% PASSING A 3" SIEVE, AND A PH OF 3.4 TO 4.8; OR GROUND PINE BARK MULCH) BY VOLUME, WITH A MAXIMUM SILT AND CLAY CONTENT OF 8%.

- NOTES:**
1. REUSE TOPSOIL ON-SITE. VERIFY SUITABILITY OF STOCKPILED TOPSOIL TO PRODUCE LOAM. CLEAN TOPSOIL OF ROOTS, PLANTS, SOFT, STONES, CLAY LUMPS, AND OTHER EXTRANEOUS MATERIALS HARMFUL TO PLANT GROWTH.
1.1. SUPPLEMENT WITH IMPORTED OR MANUFACTURED LOAM FROM OFF-SITE SOURCES WHEN QUANTITIES ARE INSUFFICIENT, OBTAIN TOPSOIL DISPLACED FROM NATURALLY WELL-DRAINED CONSTRUCTION OR MINING SITES WHERE TOPSOIL OCCURS AT LEAST 6 INCHES DEEP.
 2. LOAM OR RESPREAD TOPSOIL SHALL CONFORM TO ASTM D5268, WITH PH BETWEEN 5.5 AND 7, A MINIMUM OF 6 PERCENT ORGANIC MATERIAL CONTENT, FREE OF STONES 1/4 INCH OR LARGER AND FREE OF OTHER EXTRANEOUS MATERIALS. SHALL NOT BE OBTAINED FROM AGRICULTURAL LAND, BOGS, OR MARSHES.
 3. ALL SURFACED AREAS OR DISTURBED AREAS NOT SPECIFIED ON THE PLANS SHALL RECEIVE 6 INCHES OF LOAM OR RESPREAD TOPSOIL, SEED, MULCH, AND BE WATERED UNTIL A HEALTHY STAND OF GRASS IS OBTAINED.
 4. SEED MIX SHALL BE "HART'S LOW GROW MIXTURE" OR APPROVED EQUAL BY ENGINEER UNLESS OTHERWISE NOTED ON THE PLANS.

No.	DATE	DESIGNER	REVIEWER
1.	8/7/2025	AFJ	AGG
ADDITIONUM 1			
DESCRIPTION			
SEAL			
SCALE: HORZ.: 1" = 20'			
VERT.: -			
DATUM: -			
HORZ.: -			
VERT.: -			
0 10' 20' 40'			
GRAPHIC SCALE			

FUSS & O'NEILL
317 IRON HORSE WAY, SUITE 204
PROVIDENCE, RI 02908
www.fussandoneill.com

CITY OF PAWTUCKET
DETAILS
SLATER PARK NORTH PARKING LOT
IMPROVEMENTS
PAWTUCKET
RHODE ISLAND

PROJ. No.: 20221011.A20
DATE: JULY 1, 2025

CD-503



CITY OF PAWTUCKET

Slater Park North Parking Lot Improvements Bid #25-036

Pre-Construction Meeting: Tuesday, July 22, 2025 @ 11:00 a.m.

Location: Sally Road, Slater Park, Pawtucket, RI 02860



SIGN-IN SHEET

Please Print Clearly

Name	Company	Address	Phone No.	E-Mail Address
Eric Hammerschlag	City Engineer	250 Armistice Blvd. Pawtucket, RI 02860	(401) 728-0500, X364	ehammerschlag@pawtucketri.gov
Emily Morse	GIS Coordinator/Project Leader	250 Armistice Blvd. Pawtucket, RI 02860	(401) 728-0500, X240	emorse@pawtucketri.gov
David Taylor	Project Leader	250 Armistice Blvd. Pawtucket, RI 02860	(401) 728-0500, X366	dtaylor@pawtucketri.gov
Jon KEY	KEY CORP.	170 FIORR INDUSTRIAL DR. WAKEFIELD, RI 02879	401-783-8583	Jon@KEYCORPconstruction.com
MARK HOPE	SKULKA CONST	301 EAST GREENWICH AVE WEST WARWICK RI 02893	401-241-3236	MARK@SKULKAconstruction.com
Trevin Alpaio	Narr Inc	223 Allens Ave Providence	401 226 4296	TAlpaio@NicoRI.com
ARMANDO RICCI	RICCI DRAIN	19 LILY ST. PROV. RI 02909	401-421-6877	ARICCI@RICCIDRAIN.com
Peter Wingate	City of Pawtucket	137 Roosevelt Ave, Pawtucket, RI	401-728-0500	pwingate@pawtucketri.gov

Superseded General Decision Number: RI20240001

State: Rhode Island

Construction Types: Building, Heavy (Heavy and Marine) and Highway

Counties: Rhode Island Statewide.

BUILDING CONSTRUCTION PROJECTS (does not include residential construction consisting of single family homes and apartments up to and including 4 stories) HEAVY, HIGHWAY AND MARINE CONSTRUCTION PROJECTS

Note: Contracts subject to the Davis-Bacon Act are generally required to pay at least the applicable minimum wage rate required under Executive Order 14026 or Executive Order 13658. Please note that these Executive Orders apply to covered contracts entered into by the federal government that are subject to the Davis-Bacon Act itself, but do not apply to contracts subject only to the Davis-Bacon Related Acts, including those set forth at 29 CFR 5.1(a)(1).

If the contract is entered into on or after January 30, 2022, or the contract is renewed or extended (e.g., an option is exercised) on or after January 30, 2022:	<ul style="list-style-type: none">. Executive Order 14026 generally applies to the contract.. The contractor must pay all covered workers at least \$17.75 per hour (or the applicable wage rate listed on this wage determination, if it is higher) for all hours spent performing on the contract in 2025.
If the contract was awarded on or between January 1, 2015 and January 29, 2022, and the contract is not renewed or extended on or after January 30, 2022:	<ul style="list-style-type: none">. Executive Order 13658 generally applies to the contract.. The contractor must pay all covered workers at least \$13.30 per hour (or the applicable wage rate listed on this wage determination, if it is higher) for all hours spent performing on that contract in 2025.

The applicable Executive Order minimum wage rate will be adjusted annually. If this contract is covered by one of the Executive Orders and a classification considered necessary for performance of work on the contract does not appear on this wage determination, the contractor must still submit a conformance request.

Additional information on contractor requirements and worker protections under the Executive Orders is available at <http://www.dol.gov/whd/govcontracts>.

Modification Number	Publication Date
0	01/03/2025
1	03/07/2025
2	03/14/2025
3	05/16/2025
4	06/13/2025
5	07/04/2025
6	07/25/2025

ASBE0006-006 09/01/2024

	Rates	Fringes
HAZARDOUS MATERIAL HANDLER (Includes preparation, wetting, stripping, removal scrapping, vacuuming, bagging & disposing of all insulation materials, whether they contain asbestos or not, from mechanical systems).....	\$ 49.91	36.63

ASBE0006-008 09/01/2024

	Rates	Fringes
Asbestos Worker/Insulator Includes application of all insulating materials, protective coverings, coatings & finishes to all types of mechanical systems.	\$ 49.91	36.63

BOIL0029-001 01/01/2025

	Rates	Fringes
BOILERMAKER.....	\$ 50.62	28.82

BRRI0003-001 06/01/2022

	Rates	Fringes
Bricklayer, Stonemason, Pointer, Caulker & Cleaner.....	\$ 46.86	29.14

BRRI0003-002 09/01/2022

	Rates	Fringes
Marble Setter, Terrazzo Worker & Tile Setter.....	\$ 46.54	30.34

BRRI0003-003 09/01/2022

	Rates	Fringes
Marble, Tile & Terrazzo Finisher.....	\$ 38.78	29.61

CARP0330-001 06/02/2025

Rates	Fringes
-------	---------

CARPENTER (Includes Soft Floor Layer).....	\$ 47.88	30.50
Diver Tender.....	\$ 48.68	30.50
DIVER.....	\$ 60.83	30.50
Piledriver.....	\$ 41.53	29.35
WELDER.....	\$ 48.68	30.50

FOOTNOTES:

When not diving or tending the diver, the diver and diver tender shall receive the piledriver rate. Diver tenders shall receive \$1.00 per hour above the pile driver rate when tending the diver.

Work on free-standing stacks, concrete silos & public utility electrical power houses, which are over 35 ft. in height when constructed: \$.50 per hour additional.

Work on exterior concrete shear wall gang forms, 45 ft. or more above ground elevation or on setback: \$.50 per hour additional.

The designated piledriver, known as the ""monkey"": \$1.00 per hour additional.

CARP1121-002 01/06/2025

	Rates	Fringes
MILLWRIGHT.....	\$ 45.72	31.50

* ELEC0099-002 06/01/2025

	Rates	Fringes
ELECTRICIAN.....	\$ 56.11	44.10%
Teledata System Installer.....	\$ 42.09	10.45%+15.31

FOOTNOTES:

Work of a hazardous nature, or where the work height is 30 ft. or more from the floor, except when working OSHA-approved lifts: 20% per hour additional.

Work in tunnels below ground level in combined sewer outfall: 20% per hour additional.

ELEV0039-001 01/01/2025

	Rates	Fringes
ELEVATOR MECHANIC.....	\$ 64.52	38.435+a+b

FOOTNOTES:

a. PAID HOLIDAYS: New Years Day; Memorial Day; Independence Day; Labor Day; Veterans' Day; Thanksgiving Day; the Friday after Thanksgiving Day; and Christmas Day.

b. Employer contributes 8% basic hourly rate for 5 years or more of service of 6% basic hourly rate for 6 months to 5 years of service as vacation pay credit.

Rates Fringes

Operating Engineer: (power
plants, sewer treatment
plants, pumping stations,
tunnels, caissons, piers,
docks, bridges, wind
turbines, subterranean &
other marine and heavy
construction work)

GROUP 1.....	\$ 50.30	29.70
GROUP 2.....	\$ 48.30	29.70
GROUP 3.....	\$ 43.92	29.70
GROUP 4.....	\$ 41.07	29.70
GROUP 5.....	\$ 47.35	29.70
GROUP 6.....	\$ 38.15	29.70
GROUP 7.....	\$ 32.15	29.70
GROUP 8.....	\$ 44.00	29.70
GROUP 9.....	\$ 47.92	29.70

a. BOOM LENGTHS, INCLUDING JIBS:

150 feet and over + \$ 2.00
180 feet and over + \$ 3.00
210 feet and over + \$ 4.00
240 feet and over + \$ 5.00
270 feet and over + \$ 7.00
300 feet and over + \$ 8.00
350 feet and over + \$ 9.00
400 feet and over + \$10.00

a. PAID HOLIDAYS:

New Year's Day, President's Day, Memorial Day, July Fourth,
Victory Day, Labor Day, Columbus Day, Veterans Day,
Thanksgiving Day, Christmas Day. a: Any employee who works
3 days in the week in which a holiday falls shall be paid
for the holiday.

a. FOOTNOTES:

Hazmat work: \$2.00 per hour additional.
Tunnel/Shaft work: \$5.00 per hour additional.

POWER EQUIPMENT OPERATORS CLASSIFICATIONS

GROUP 1: Cranes, lighters, boom trucks and derricks

GROUP 2: Digging machine, Ross Carrier, locomotive, hoist,
elevator, bidwell-type machine, shot & water blasting
machine, paver, spreader, graders, front end loader (3 yds.
and over), vibratory hammer & vacuum truck, roadheaders,
forklifts, econobile type equipment, tunnel boring
machines, concrete pump and on site concrete plants.

GROUP 3: Oilers on cranes.

GROUP 4: Oiler on crawler backhoe.

GROUP 5: Bulldozer, bobcats, skid steer loader, tractor,
scraper, combination loader backhoe, roller, front end
loader (less than 3 yds.), street and mobile-powered
sweeper (3-yd. capacity), 8-ft. sweeper minimum 65 HP).

GROUP 6: Well-point installation crew.

GROUP 7: Utility Engineers and Signal Persons

GROUP 8: Heater, concrete mixer, stone crusher, welding machine, generator and light plant, gas and electric driven pump and air compressor.

GROUP 9: Boat & tug operator.

ENGI0057-003 06/01/2025

BUILDING CONSTRUCTION

	Rates	Fringes
Power Equipment Operator		
GROUP 1.....	\$ 49.57	29.50
GROUP 2.....	\$ 47.57	29.50
GROUP 3.....	\$ 47.35	29.50
GROUP 4.....	\$ 43.35	29.50
GROUP 5.....	\$ 40.50	29.50
GROUP 6.....	\$ 46.65	29.50
GROUP 7.....	\$ 46.65	29.50
GROUP 8.....	\$ 43.54	29.50

a. BOOM LENGTHS, INCLUDING JIBS:

150 ft. and over: + \$ 2.00
180 ft. and over: + \$ 3.00
210 ft. and over: + \$ 4.00
240 ft. and over: + \$ 5.00
270 ft. and over: + \$ 7.00
300 ft. and over: + \$ 8.00
350 ft. and over: + \$ 9.00
400 ft. and over: + \$10.00

a. PAID HOLIDAYS: New Year's Day, President's Day, Memorial Day, July Fourth, Victory Day, Labor Day, Columbus Day, Veterans Day, Thanksgiving Day & Christmas Day. a: Any employee who works 3 days in the week in which a holiday falls shall be paid for the holiday.

a. FOOTNOTE: Hazmat work: \$2.00 per hour additional.
Tunnel/Shaft work: \$5.00 per hour additional.

POWER EQUIPMENT OPERATORS CLASSIFICATIONS

GROUP 1: Cranes, lighters, boom trucks and derricks.

GROUP 2: Digging machine, Ross carrier, locomotive, hoist, elevator, bidwell-type machine, shot & water blasting machine, paver, spreader, front end loader (3 yds. and over), vibratory hammer and vacuum truck

GROUP 3: Telehandler equipment, forklift, concrete pump & on-site concrete plant

GROUP 4: Fireman & oiler on cranes

GROUP 5: Oiler on crawler backhoe

GROUP 6: Bulldozer, skid steer loaders, bobcats, tractor, grader, scraper, combination loader backhoe, roller, front end loader (less than 3 yds.), street and mobile powered sweeper (3 yds. capacity), 8-ft. sweeper (minimum 65 hp)

GROUP 7: Well point installation crew

GROUP 8: Heater, concrete mixer, stone crusher, welding machine, generator for light plant, gas and electric driven pump & air compressor

ENGI0057-005 05/01/2025

	Rates	Fringes
Power Equipment Operator (highway construction projects; water and sewerline projects which are incidental to highway construction projects; and bridge projects that do not span water)		
GROUP 1.....	\$ 45.45	29.70
GROUP 2.....	\$ 43.45	29.70
GROUP 3.....	\$ 38.15	29.70
GROUP 4.....	\$ 24.75	29.70
GROUP 5.....	\$ 32.15	29.70
GROUP 6.....	\$ 38.73	29.70
GROUP 7.....	\$ 42.43	29.70
GROUP 8.....	\$ 37.70	29.70

a. FOOTNOTE: a. Any employee who works three days in the week in which a holiday falls shall be paid for the holiday.

b. PAID HOLIDAYS: New Year's Day, President's Day, Memorial Day, July Fourth, Victory Day, Labor Day, Columbus Day, Veterans Day, Thanksgiving Day & Christmas Day.

POWER EQUIPMENT OPERATOR CLASSIFICATIONS

GROUP 1: Cranes, pile drivers, lighters, boom trucks, hoists, derricks

GROUP 2: Digging machines, excavators, locomotives, John Henry's, directional drilling machines, cold planers, reclaimers, pavers, spreaders, graders, front-end loaders (3yds & over), vacuum truck, drill/boring machine operators, vermeer saw, water blaster, hydraulic-demolition robot, Ross Carriers, concrete pump operators, asphalt/material transfer machines, rotating telehandlers, SPMT type equipment

GROUP 3: Wellpoint installation and drill/boring machine assistants

GROUP 4: Utility engineers

GROUP 5: Signal persons

GROUP 6: Oilers on cranes and deckhands

GROUP 7: Combination loader / backhoes, front-end loaders (less than 3 yds.), forklift, bulldozers, scrapers, boats, rollers, skid steer loaders (regardless of attachments),

street sweepers, mechanics, welders, operators in materials yards, shops and garages

GROUP 8: Gas and electric drive heaters, concrete mixers, light plants, welding machines, pumps and compressors

IRON0037-001 03/16/2025

	Rates	Fringes
IRONWORKER.....	\$ 42.58	32.98

LABO0271-001 12/03/2023

BUILDING CONSTRUCTION

	Rates	Fringes
LABORER		
GROUP 1.....	\$ 37.00	26.90
GROUP 2.....	\$ 37.00	26.90
GROUP 3.....	\$ 37.00	26.90
GROUP 4.....	\$ 37.00	26.90
GROUP 5.....	\$ 39.00	26.90

LABORERS CLASSIFICATIONS

GROUP 1: Laborer, Carpenter Tender, Mason Tender, Cement Finisher Tender, Scaffold Erector, Wrecking Laborer, Asbestos Removal [Non-Mechanical Systems]

GROUP 2: Asphalt Raker, Adzemen, Pipe Trench Bracer, Demolition Burner, Chain Saw Operator, Fence & Guard Rail Erector, Setter of Metal Forms for Roadways, Mortar Mixer, Pipelayer, Riprap & Dry Stonewall Builder, Highway Stone Spreader, Pneumatic Tool Operator, Wagon Drill Operator, Tree Trimmer, Barco-Type Jumping Tamper, Mechanical Grinder Operator

GROUP 3: Pre-Cast Floor & Roof Plank Erectors

GROUP 4: Air Track Operator, Hydraulic & Similar Self-Powered Drill, Block Paver, Rammer, Curb Setter, Powderman & Blaster

GROUP 5: Toxic Waste Remover

LABORERS CLASSIFICATIONS

GROUP 1: Laborer, Carpenter Tender, Mason Tender, Cement Finisher Tender, Scaffold Erector, Wrecking Laborer, Asbestos Removal [Non-Mechanical Systems]

GROUP 2: Asphalt Raker, Adzemen, Pipe Trench Bracer, Demolition Burner, Chain Saw Operator, Fence & Guard Rail Erector, Setter of Metal Forms for Roadways, Mortar Mixer, Pipelayer, Riprap & Dry Stonewall Builder, Highway Stone Spreader, Pneumatic Tool Operator, Wagon Drill Operator, Tree Trimmer, Barco-Type Jumping Tamper, Mechanical Grinder Operator

GROUP 3: Pre-Cast Floor & Roof Plank Erectors

GROUP 4: Air Track Operator, Hydraulic & Similar Self-Powered Drill, Block Paver, Rammer, Curb Setter, Powderman & Blaster

GROUP 5: Toxic Waste Remover

LAB00271-002 11/27/2022

HEAVY AND HIGHWAY CONSTRUCTION

	Rates	Fringes
LABORER		
COMPRESSED AIR		
Group 1.....	\$ 55.40	24.15
Group 2.....	\$ 52.93	24.15
Group 3.....	\$ 42.45	24.15
FREE AIR		
Group 1.....	\$ 46.00	24.15
Group 2.....	\$ 45.00	24.15
Group 3.....	\$ 42.45	24.15
LABORER		
Group 1.....	\$ 33.05	24.05
Group 2.....	\$ 35.75	24.85
Group 3.....	\$ 36.50	24.85
Group 4.....	\$ 29.00	24.85
Group 5.....	\$ 37.50	24.85
OPEN AIR CAISSON, UNDERPINNING WORK AND BORING CREW		
Bottom Man.....	\$ 41.50	24.15
Top Man & Laborer.....	\$ 35.60	24.15
TEST BORING		
Driller.....	\$ 41.95	24.15
Laborer.....	\$ 41.95	24.15
LABORER CLASSIFICATIONS		

GROUP 1: Laborer; Carpenter tender; Cement finisher tender;
Wrecking laborer; Asbestos removers [non-mechanical systems];
Plant laborer; Driller in quarries

GROUP 2: Adzeperson; Asphalt raker; Barcotype jumping tamper;
Chain saw operators; Concrete and power buggy operator;
Concrete saw operator; Demolition burner; Fence and guard rail
erector; Highway stone spreader; Laser beam operator;
Mechanical grinder operator; Mason tender; Mortar mixer;
Pneumatic tool operator; Riprap and dry stonewall builder;
Scaffold erector; Setter of metal forms for roadways; Wagon
drill operator; Wood chipper operator; Pipelayer; Pipe trench
bracer

GROUP 3: Air track drill operator; Hydraulic and similar
powered drills; Brick paver; Block paver; Rammer and curb
setter; Powderperson and blaster

GROUP 4: Flagger & signaler

GROUP 5: Toxic waste remover

LABORER - COMPRESSED AIR CLASSIFICATIONS

GROUP 1: Mucking machine operator, tunnel laborer, brake
person, track person, miner, grout person, lock tender, gauge
tender, miner: motor person & all others in compressed air

GROUP 2: Change house attendant, powder watchperson, top
person on iron

GROUP 3: Hazardous waste work within the ""HOT"" zone

LABORER - FREE AIR CLASSIFICATIONS

GROUP 1: Grout person - pumps, brake person, track person, form mover & stripper (wood & steel), shaft laborer, laborer topside, outside motorperson, miner, conveyor operator, miner welder, heading motorperson, erecting operator, mucking machine operator, nozzle person, rodperson, safety miner, shaft & tunnel, steel & rodperson, mole nipper, concrete worker, form erector (wood, steel and all accessories), cement finisher (this type of work only), top signal person, bottom person (when heading is 50' from shaft), burner, shield operator and TBM operator

GROUP 2: Change house attendant, powder watchperson

GROUP 3: Hazardous waste work within the ""HOT"" zone

LABORER CLASSIFICATIONS

GROUP 1: Laborer; Carpenter tender; Cement finisher tender; Wrecking laborer; Asbestos removers [non-mechanical systems]; Plant laborer; Driller in quarries

GROUP 2: Adzeperson; Asphalt raker; Barcotype jumping tamper; Chain saw operators; Concrete and power buggy operator; Concrete saw operator; Demolition burner; Fence and guard rail erector; Highway stone spreader; Laser beam operator; Mechanical grinder operator; Mason tender; Mortar mixer; Pneumatic tool operator; Riprap and dry stonewall builder; Scaffold erector; Setter of metal forms for roadways; Wagon drill operator; Wood chipper operator; Pipelayer; Pipe trench bracer

GROUP 3: Air track drill operator; Hydraulic and similar powered drills; Brick paver; Block paver; Rammer and curb setter; Powderperson and blaster

GROUP 4: Flagger & signaler

GROUP 5: Toxic waste remover

LABORER - COMPRESSED AIR CLASSIFICATIONS

GROUP 1: Mucking machine operator, tunnel laborer, brake person, track person, miner, grout person, lock tender, gauge tender, miner: motor person & all others in compressed air

GROUP 2: Change house attendant, powder watchperson, top person on iron

GROUP 3: Hazardous waste work within the ""HOT"" zone

LABORER - FREE AIR CLASSIFICATIONS

GROUP 1: Grout person - pumps, brake person, track person, form mover & stripper (wood & steel), shaft laborer, laborer topside, outside motorperson, miner, conveyor operator, miner welder, heading motorperson, erecting operator, mucking machine operator, nozzle person, rodperson, safety miner, shaft & tunnel, steel & rodperson, mole nipper, concrete worker, form erector (wood, steel and all accessories), cement finisher (this type of work only),

top signal person, bottom person (when heading is 50' from shaft), burner, shield operator and TBM operator

GROUP 2: Change house attendant, powder watchperson

GROUP 3: Hazardous waste work within the ""HOT"" zone

PAIN0011-005 06/01/2024

	Rates	Fringes
PAINTER		
Brush and Roller.....	\$ 38.07	25.80
Epoxy, Tanks, Towers, Swing Stage & Structural Steel.....	\$ 40.07	25.80
Spray, Sand & Water Blasting.....	\$ 41.07	25.80
Taper.....	\$ 38.82	25.80
Wall Coverer.....	\$ 38.57	25.80

PAIN0011-006 06/01/2024

	Rates	Fringes
GLAZIER.....	\$ 41.63	26.15

FOOTNOTES:

SWING STAGE: \$1.00 per hour additional.

PAID HOLIDAYS: Labor Day & Christmas Day.

PAIN0011-011 06/01/2024

	Rates	Fringes
Painter (Bridge Work).....	\$ 57.85	26.40

PAIN0035-008 06/01/2011

	Rates	Fringes
Sign Painter.....	\$ 24.79	13.72

PLAS0040-001 01/01/2025

BUILDING CONSTRUCTION

	Rates	Fringes
CEMENT MASON/CONCRETE FINISHER...	\$ 44.75	29.10

FOOTNOTE: Cement Mason: Work on free swinging scaffolds under 3 planks width and which is 20 or more feet above ground and any offset structure: \$.30 per hour additional.

PLAS0040-002 01/01/2025

HEAVY AND HIGHWAY CONSTRUCTION

	Rates	Fringes
--	-------	---------

CEMENT MASON/CONCRETE FINISHER...\$ 44.75 29.10

PLAS0040-003 01/01/2025

	Rates	Fringes
PLASTERER.....	\$ 45.52	29.43

PLUM0051-002 08/26/2024

	Rates	Fringes
Plumbers and Pipefitters.....	\$ 52.49	33.60

* ROOF0033-004 06/01/2025

	Rates	Fringes
ROOFER.....	\$ 46.49	31.44

SFRI0669-001 01/01/2025

	Rates	Fringes
SPRINKLER FITTER.....	\$ 49.98	33.44

SHEE0017-002 12/01/2024

	Rates	Fringes
Sheet Metal Worker.....	\$ 43.69	41.14

TEAM0251-001 05/01/2025

HEAVY AND HIGHWAY CONSTRUCTION

	Rates	Fringes
TRUCK DRIVER		
GROUP 1.....	\$ 31.86	34.51+a+b
GROUP 2.....	\$ 32.01	34.51+a+b
GROUP 3.....	\$ 32.06	34.51+a+b
GROUP 4.....	\$ 32.11	34.51+a+b
GROUP 5.....	\$ 32.21	34.51+a+b
GROUP 6.....	\$ 32.61	34.51+a+b
GROUP 7.....	\$ 32.81	34.51+a+b
GROUP 8.....	\$ 32.31	34.51+a+b
GROUP 9.....	\$ 32.56	34.51+a+b
GROUP 10.....	\$ 32.36	34.51+a+b

FOOTNOTES:

A. Paid Holidays: New Year's Day, Memorial Day, Independence Day, Labor Day, Thanksgiving Day and Christmas Day, plus Presidents' Day, Columbus Day, Veteran's Day & V-J Day, providing the employee has worked at least one day in the calendar week in which the holiday falls.

B. Employee who has been on the payroll for 1 year or more but less than 5 years and has worked 150 Days during the last year of employment shall receive 1 week's paid vacation; 5 to 10 years - 2 weeks' paid vacation; 10 or more years - 3 week's paid vacation.

C. Employees on the seniority list shall be paid a one hundred dollar (\$100.00) bonus for every four hundred (400) hours worked, up to a maximum of five hundred dollars (\$500.00)

All drivers working on a defined hazard material job site shall be paid a premium of \$2.00 per hour over applicable rate.

TRUCK DRIVER CLASSIFICATIONS

GROUP 1: Pick-up trucks, station wagons, & panel trucks

GROUP 2: Two-axle on low beds

GROUP 3: Two-axle dump truck

GROUP 4: Three-axle dump truck

GROUP 5: Four- and five-axle equipment

GROUP 6: Low-bed or boom trailer.

GROUP 7: Trailers when used on a double hook up (pulling 2 trailers)

GROUP 8: Special earth-moving equipment, under 35 tons

GROUP 9: Special earth-moving equipment, 35 tons or over

GROUP 10: Tractor trailer

WELDERS - Receive rate prescribed for craft performing operation to which welding is incidental.

=====

Note: Executive Order (EO) 13706, Establishing Paid Sick Leave for Federal Contractors applies to all contracts subject to the Davis-Bacon Act for which the contract is awarded (and any solicitation was issued) on or after January 1, 2017. If this contract is covered by the EO, the contractor must provide employees with 1 hour of paid sick leave for every 30 hours they work, up to 56 hours of paid sick leave each year. Employees must be permitted to use paid sick leave for their own illness, injury or other health-related needs, including preventive care; to assist a family member (or person who is like family to the employee) who is ill, injured, or has other health-related needs, including preventive care; or for reasons resulting from, or to assist a family member (or person who is like family to the employee) who is a victim of, domestic violence, sexual assault, or stalking. Additional information on contractor requirements and worker protections under the EO is available at <https://www.dol.gov/agencies/whd/government-contracts>.

Unlisted classifications needed for work not included within the scope of the classifications listed may be added after award only as provided in the labor standards contract clauses (29CFR 5.5 (a) (1) (iii)).

The body of each wage determination lists the classifications and wage rates that have been found to be prevailing for the type(s) of construction and geographic area covered by the wage determination. The classifications are listed in alphabetical order under rate identifiers indicating whether the particular rate is a union rate (current union negotiated rate), a survey rate, a weighted union average rate, a state adopted rate, or a supplemental classification rate.

Union Rate Identifiers

A four-letter identifier beginning with characters other than ""SU"", ""UAVG"", ?SA?, or ?SC? denotes that a union rate was prevailing for that classification in the survey. Example: PLUM0198-005 07/01/2024. PLUM is an identifier of the union whose collectively bargained rate prevailed in the survey for this classification, which in this example would be Plumbers. 0198 indicates the local union number or district council number where applicable, i.e., Plumbers Local 0198. The next number, 005 in the example, is an internal number used in processing the wage determination. The date, 07/01/2024 in the example, is the effective date of the most current negotiated rate.

Union prevailing wage rates are updated to reflect all changes over time that are reported to WHD in the rates in the collective bargaining agreement (CBA) governing the classification.

Union Average Rate Identifiers

The UAVG identifier indicates that no single rate prevailed for those classifications, but that 100% of the data reported for the classifications reflected union rates. EXAMPLE: UAVG-OH-0010 01/01/2024. UAVG indicates that the rate is a weighted union average rate. OH indicates the State of Ohio. The next number, 0010 in the example, is an internal number used in producing the wage determination. The date, 01/01/2024 in the example, indicates the date the wage determination was updated to reflect the most current union average rate.

A UAVG rate will be updated once a year, usually in January, to reflect a weighted average of the current rates in the collective bargaining agreements on which the rate is based.

Survey Rate Identifiers

The ""SU"" identifier indicates that either a single non-union rate prevailed (as defined in 29 CFR 1.2) for this classification in the survey or that the rate was derived by computing a weighted average rate based on all the rates reported in the survey for that classification. As a weighted average rate includes all rates reported in the survey, it may include both union and non-union rates. Example: SUFL2022-007 6/27/2024. SU indicates the rate is a single non-union prevailing rate or a weighted average of survey data for that classification. FL indicates the State of Florida. 2022 is the year of the survey on which these classifications and rates are based. The next number, 007 in the example, is an internal number used in producing the wage determination. The date, 6/27/2024 in the example, indicates the survey completion date for the classifications and rates under that identifier.

?SU? wage rates typically remain in effect until a new survey

is conducted. However, the Wage and Hour Division (WHD) has the discretion to update such rates under 29 CFR 1.6(c)(1).

State Adopted Rate Identifiers

The ""SA"" identifier indicates that the classifications and prevailing wage rates set by a state (or local) government were adopted under 29 C.F.R 1.3(g)-(h). Example: SAME2023-007 01/03/2024. SA reflects that the rates are state adopted. ME refers to the State of Maine. 2023 is the year during which the state completed the survey on which the listed classifications and rates are based. The next number, 007 in the example, is an internal number used in producing the wage determination. The date, 01/03/2024 in the example, reflects the date on which the classifications and rates under the ?SA? identifier took effect under state law in the state from which the rates were adopted.

WAGE DETERMINATION APPEALS PROCESS

1) Has there been an initial decision in the matter? This can be:

- a) a survey underlying a wage determination
- b) an existing published wage determination
- c) an initial WHD letter setting forth a position on a wage determination matter
- d) an initial conformance (additional classification and rate) determination

On survey related matters, initial contact, including requests for summaries of surveys, should be directed to the WHD Branch of Wage Surveys. Requests can be submitted via email to davisbaconinfo@dol.gov or by mail to:

Branch of Wage Surveys
Wage and Hour Division
U.S. Department of Labor
200 Constitution Avenue, N.W.
Washington, DC 20210

Regarding any other wage determination matter such as conformance decisions, requests for initial decisions should be directed to the WHD Branch of Construction Wage Determinations. Requests can be submitted via email to BCWD-Office@dol.gov or by mail to:

Branch of Construction Wage Determinations
Wage and Hour Division
U.S. Department of Labor
200 Constitution Avenue, N.W.
Washington, DC 20210

2) If an initial decision has been issued, then any interested party (those affected by the action) that disagrees with the decision can request review and reconsideration from the Wage and Hour Administrator (See 29 CFR Part 1.8 and 29 CFR Part 7). Requests for review and reconsideration can be submitted via email to dba.reconsideration@dol.gov or by mail to:

Wage and Hour Administrator
U.S. Department of Labor
200 Constitution Avenue, N.W.

Washington, DC 20210

The request should be accompanied by a full statement of the interested party's position and any information (wage payment data, project description, area practice material, etc.) that the requestor considers relevant to the issue.

3) If the decision of the Administrator is not favorable, an interested party may appeal directly to the Administrative Review Board (formerly the Wage Appeals Board). Write to:

Administrative Review Board
U.S. Department of Labor
200 Constitution Avenue, N.W.
Washington, DC 20210.

=====
END OF GENERAL DECISION"